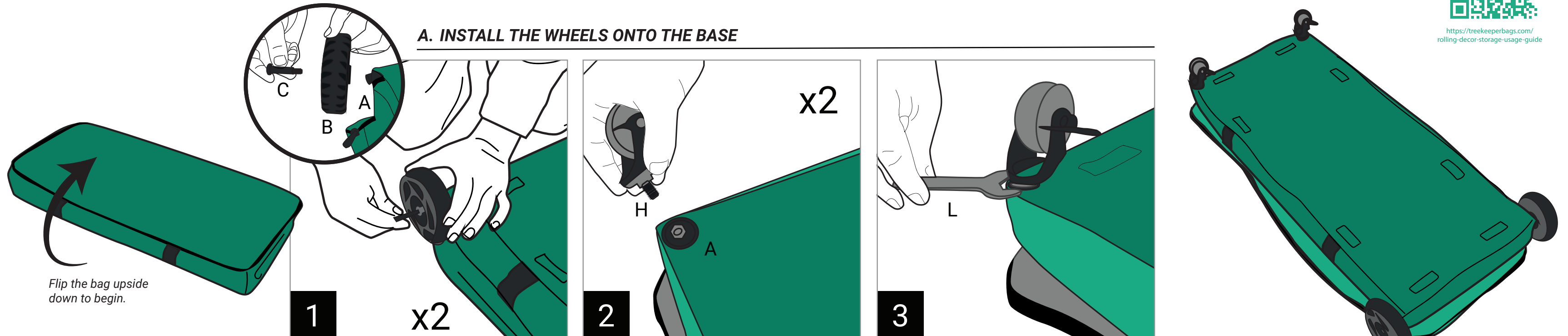


NEED HELP?



<https://treekeeperbags.com/rolling-decor-storage-usage-guide>

## A. INSTALL THE WHEELS ONTO THE BASE



Flip the bag upside down to begin.

**1** x2

**2** x2

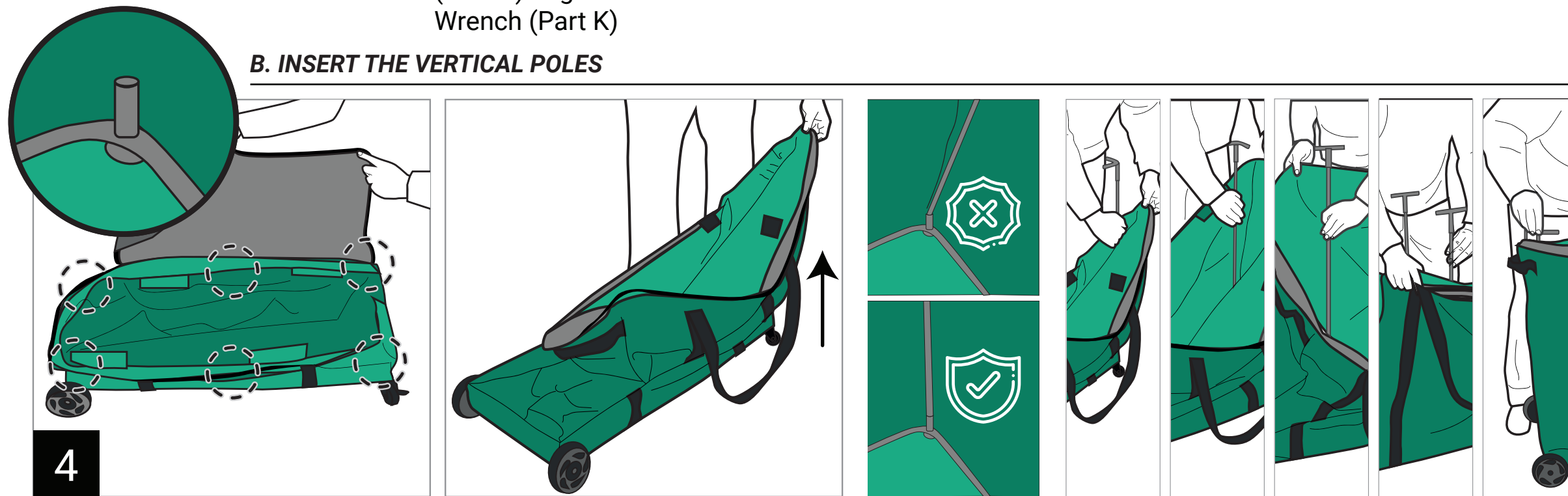
**3**

Install the two large wheels with bolts (Part B and C), onto the base (Part A). Tighten with the Allen Wrench (Part K)

Install the two swivel wheels (Part H)

Tighten with the wrench (Part L)

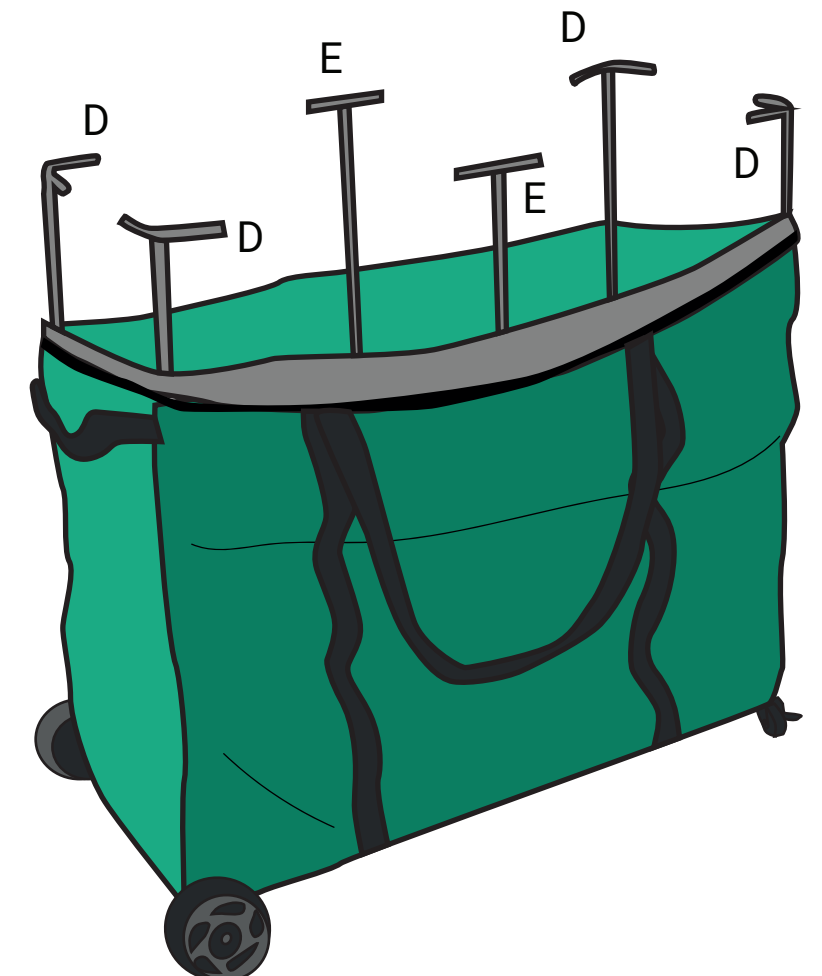
## B. INSERT THE VERTICAL POLES



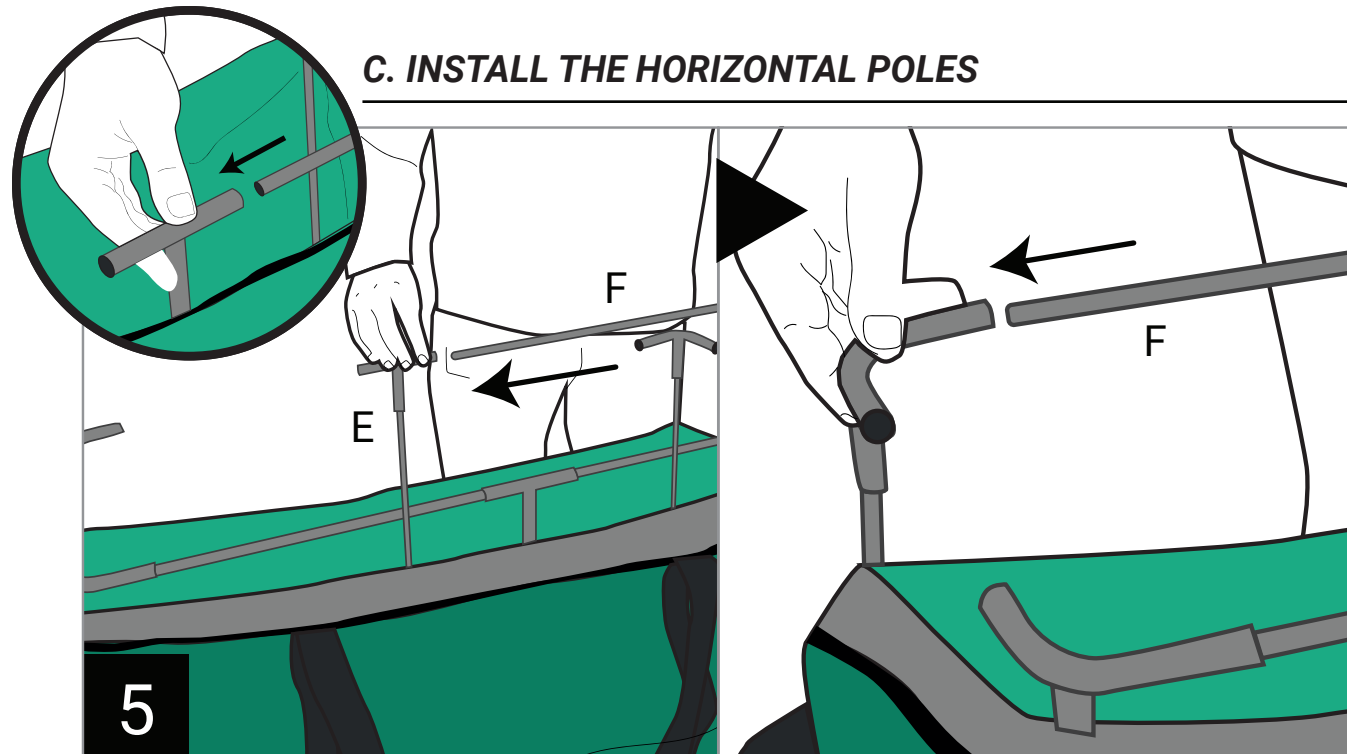
**4**

Flip the bag over and open it. Locate the 6 areas of the frame to install the vertical poles. *It's helpful to pull the sides walls of the bag up (as shown) when inserting the poles.*

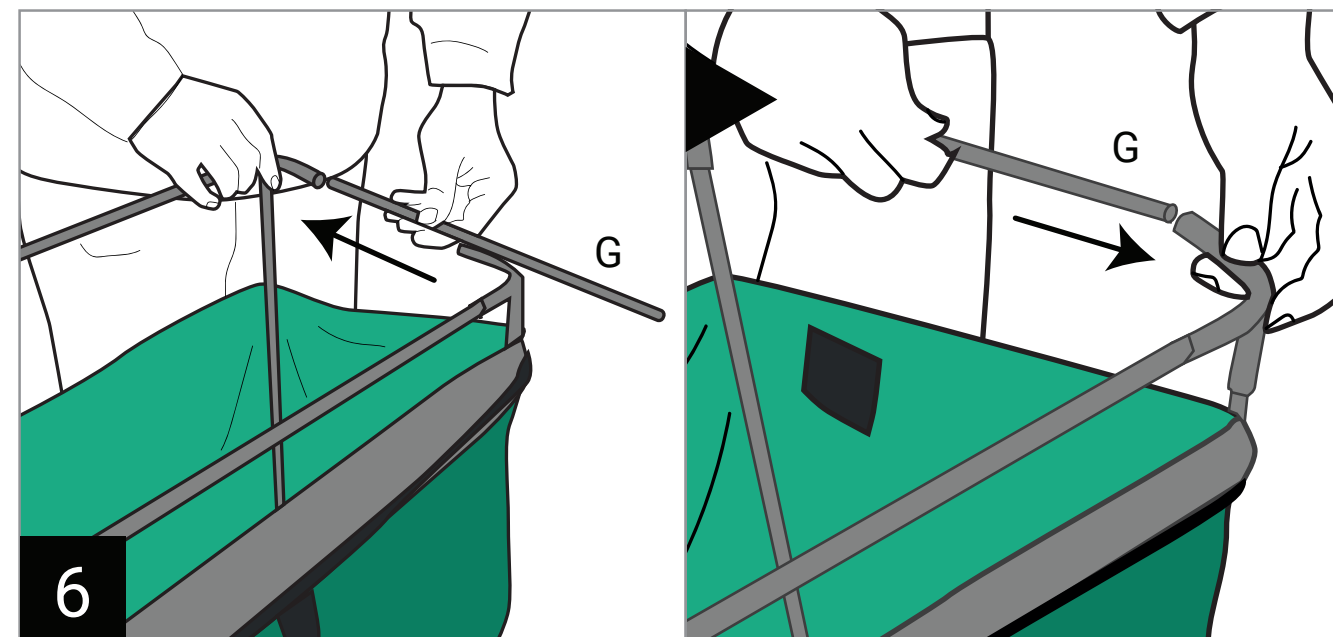
Insert each of the vertical poles as shown. Ensure the poles are vertical, not slanted. For easiest installation, grip the poles around the center of the pole.



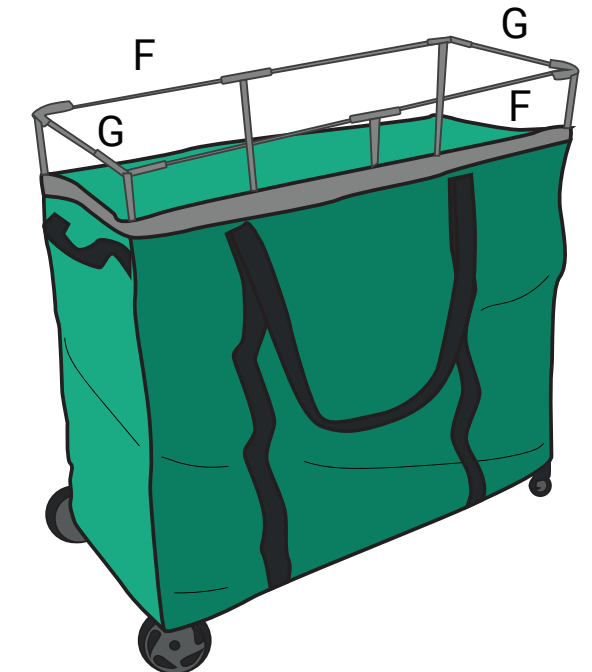
## C. INSTALL THE HORIZONTAL POLES



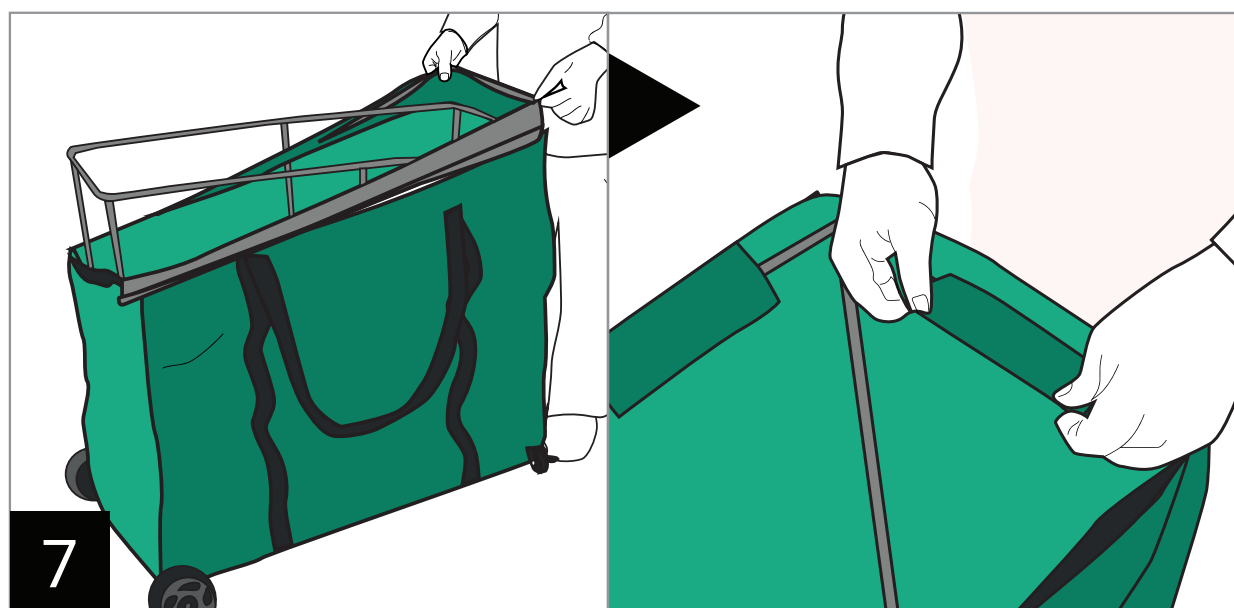
Slide the long poles (Part F) through the top sleeve of Part E, then connect both ends. Repeat on both sides.



Insert the two end poles (Part G) and connect on both sides.

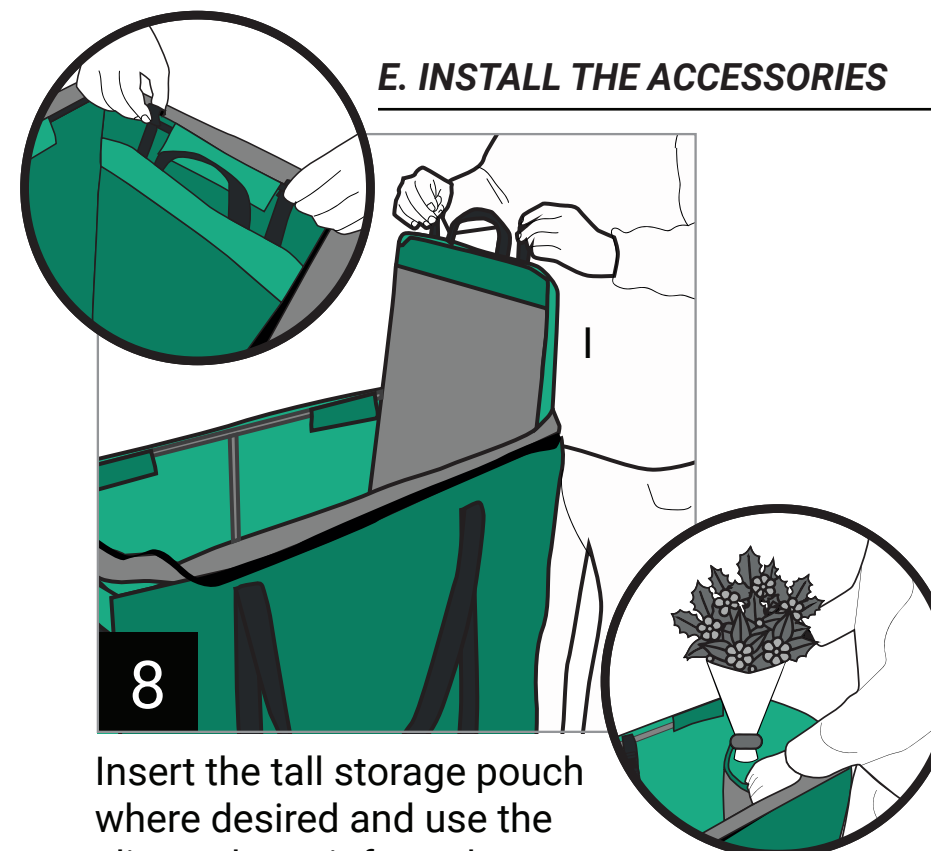


## D. VELCRO THE BAG ONTO THE FRAME

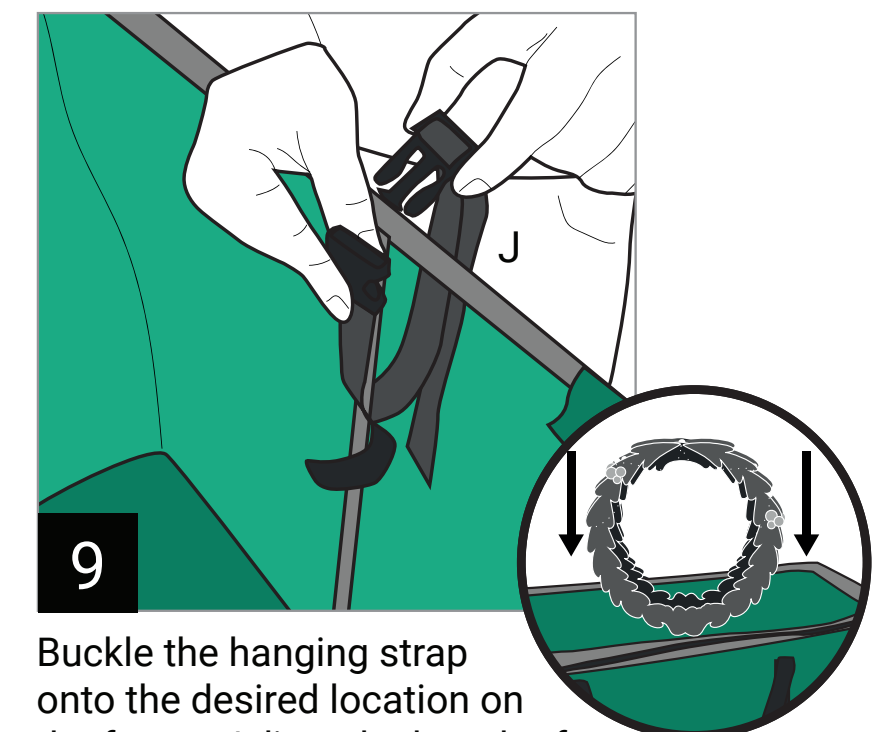


Pull the bag up and use the Velcro straps located around the perimeter of the bag to secure it to the frame.

## E. INSTALL THE ACCESSORIES



Insert the tall storage pouch where desired and use the clips to hang it from the top horizontal rods.



Buckle the hanging strap onto the desired location on the frame. Adjust the length of the strap as needed.